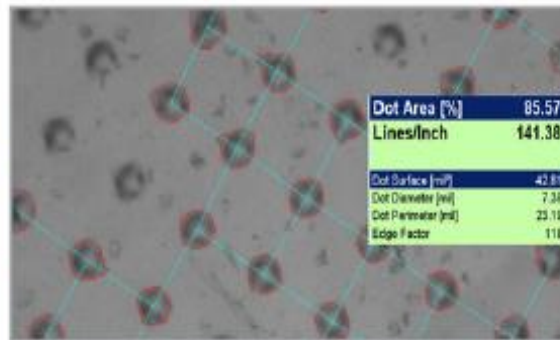
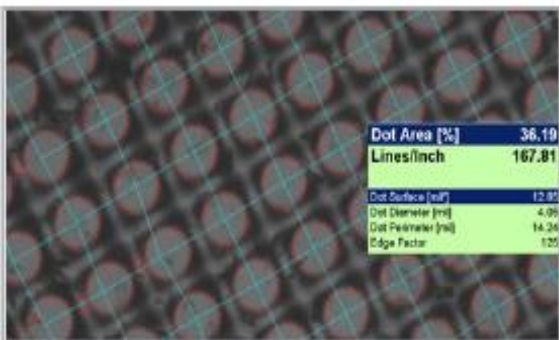
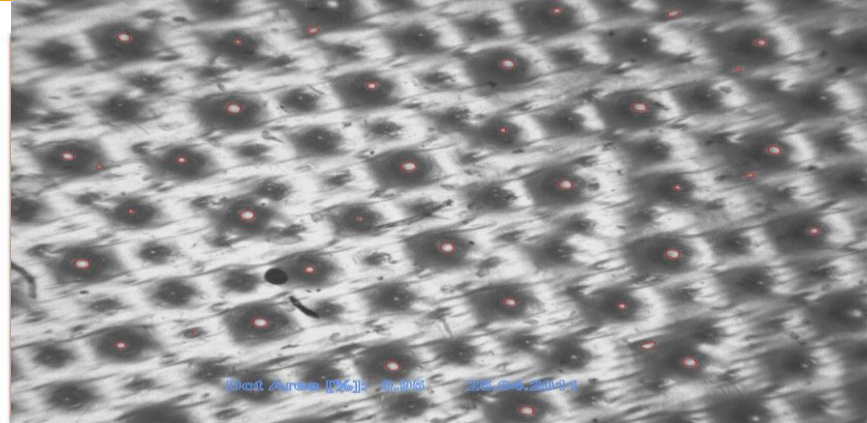


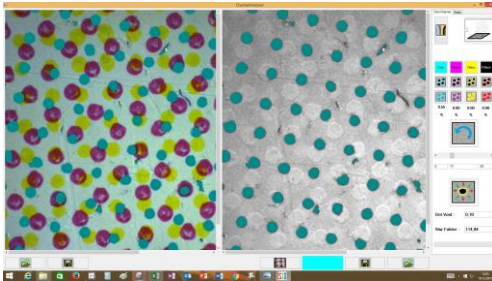
Highlights



HD flexo

Shadows

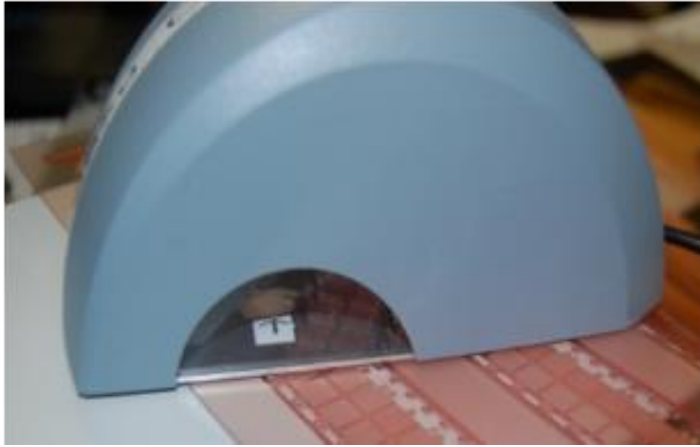
Color Separation



- Cyan
- Magenta
- Yellow
- Black

Functions	Measurement of	Plate Type	Measurement Technology
-Dot area %	Flexo Plates	AM,FM	Sensor 1,3MB
- Dot size (dot diameter)/µm/mil	Masked Material		Area to be analysed >3mm²
Screen ruling (lines/cm or lines/inch)	Film		Screen Ruling:23-85L/cm; 58-216 Lpi
Line Width			Repeatability: +/- 0,5%
Angle	Special Feature		Separate lightbox with external powersupply
Digital zoom 4x	Autocalibration with ISO Target		Optional
Magnification: 422% for sideview			ISO Calibration target
Interface: Power Supply:			Delivery content
USB 2	USB2 power		plate reader incl. USB cabel
	Lightbox; external powersupply		Software and Dongle
Sytem Requirements	Windows7,XP,Vista, processor min.1GHz, 1GB RAM,2 USB2 ports,CD Drive, min screen resolutuion 1024x768		Lightbox with external powersupply <12 Volt Transportation box

From Film/Mask to Plate



The most cost-effective device to control your flexoplate production.
 The only portable flexo analyzer on the market with an ISO calibration for AUTO-Calibration

The software interface displays two side-by-side images of a flexographic plate: a top-view on the left and a side-view on the right. The right panel shows a grid of bright, glowing dots. The bottom status bar includes a progress bar at 100% and various measurement units.

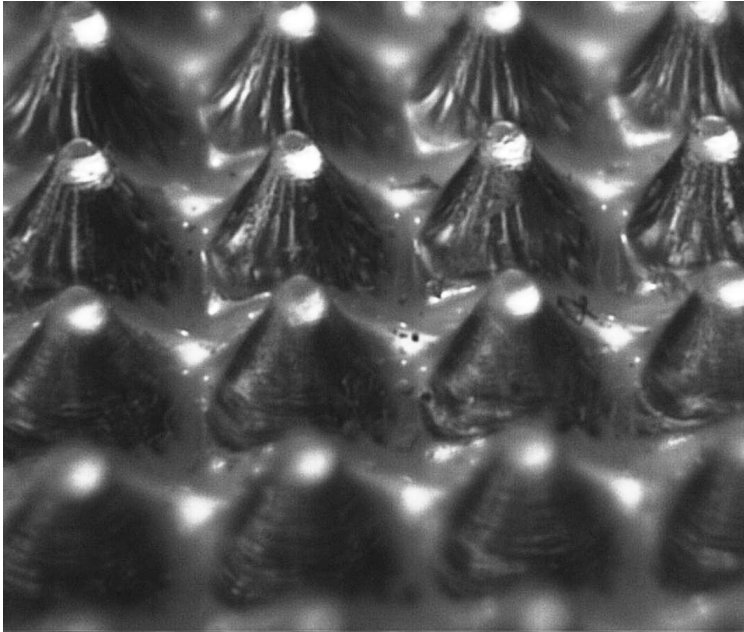
Measurement	Value
Dot Area [%]	2.46
Lines/Inch	90.61
Dot Surface [μm^2]	1935.76
Dot Diameter [μm]	49.65
Dot Perimeter [μm]	159.72
Edge Factor	105

Height:	774.08
Angle:	72.72
M-Length:	810.68
Top-Area:	0.0
Length:	0.0

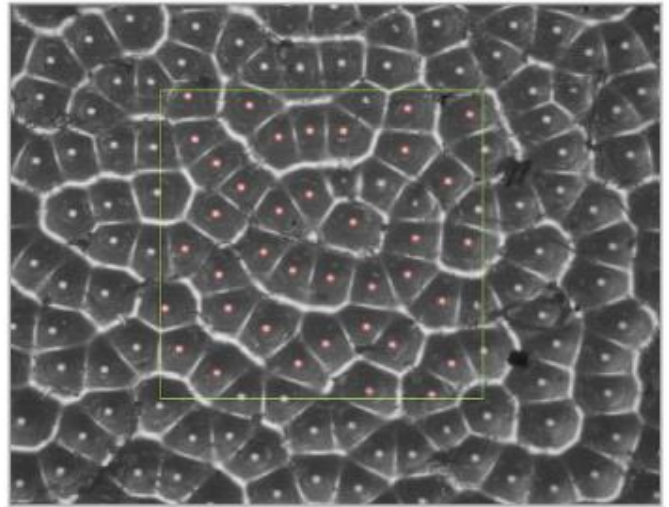
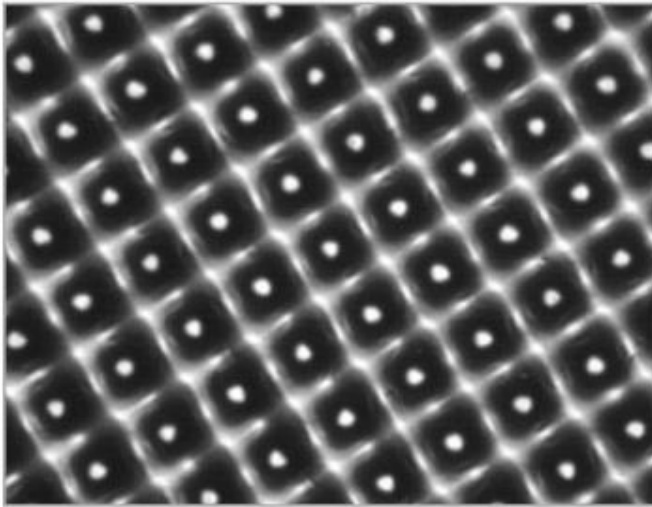
Write Data to Table

Progress Bar: 100 % Angle [°] Length [μm] DotArea [μm^2] Diameter [μm] Perimeter [μm] Line [μm] Lines[L/Inch]

See Top-view and Side-view in parallel and live



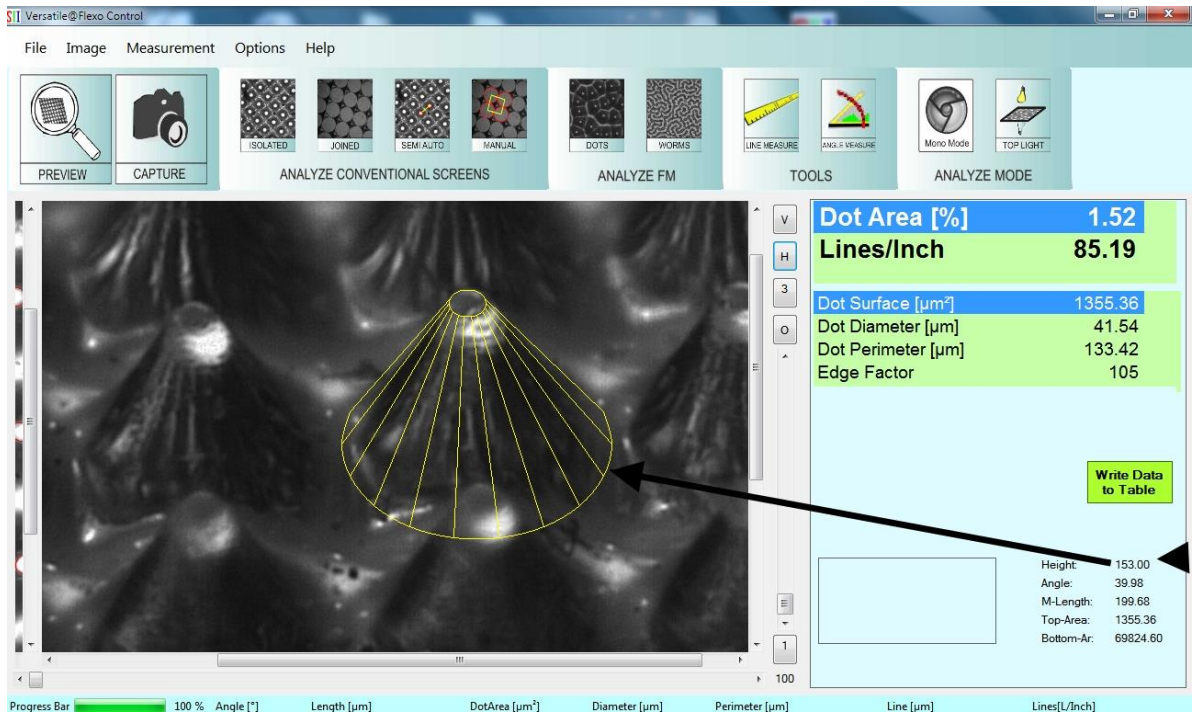
Save Side-view and
Top-view



Visualize and capture the area you want to analyse, in AM and FM, fully automatically.

What makes the Flexo Control^{3D} unique

- Automatically analyzes all printing dots on an area of $>1\text{mm}^2$
- Repeatability better than $\pm 0.5\%$
- Measure all material from 80 – 200+ lpi
- Compare mask and plate results with the build in data and graph analyser
- Analyse AM and FM plates fully automatically
- Meet highest quality requirements with ISO target and auto-calibration system



Collect information about Height, Angle!

See the Dot Structure and Surface in detail!

Data Capture

- Image with measured results
- ImageHistory of measurements
- Data comparison, i.e. mask vs. plate
- Save all data and the graph of the data plot window
- Save data of ISO target measurement

Single Measurement of

- Barcode width
- Screen ruling
- Screen Angle
- Single dot size
- Adjacent groups of 4 dots

