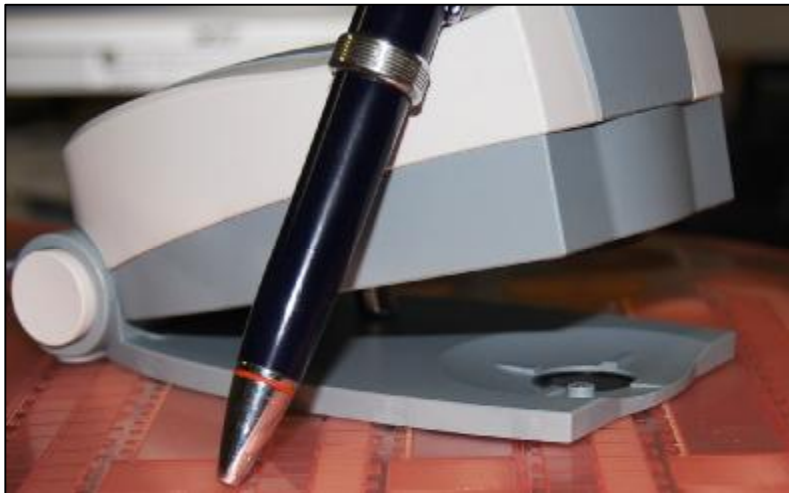


Flexo Control

From Film/Mask to Plate

Sibress



The new Flexo Control

The most cost-effective device to control your flexoplate production. The only portable flexo analyzer on the market with an ISO calibration target.

Easy positioning with the „bull’s eye“



Visualize and capture the area you want to analyze.



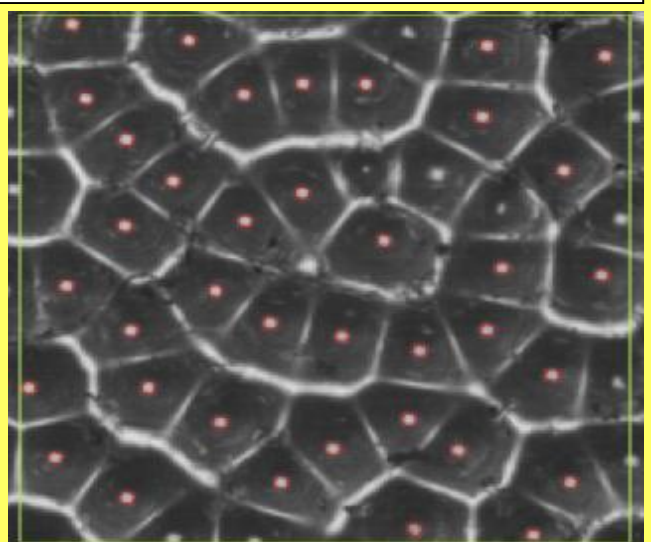
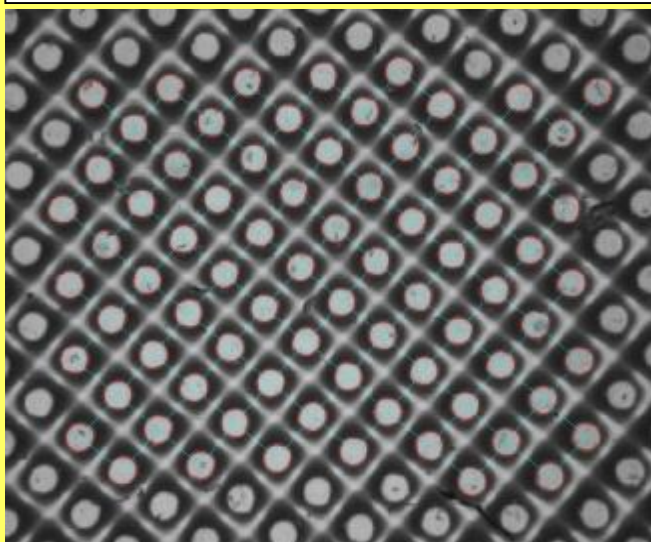
The separate „Lighthouse“ helps to measure anywhere on the plate

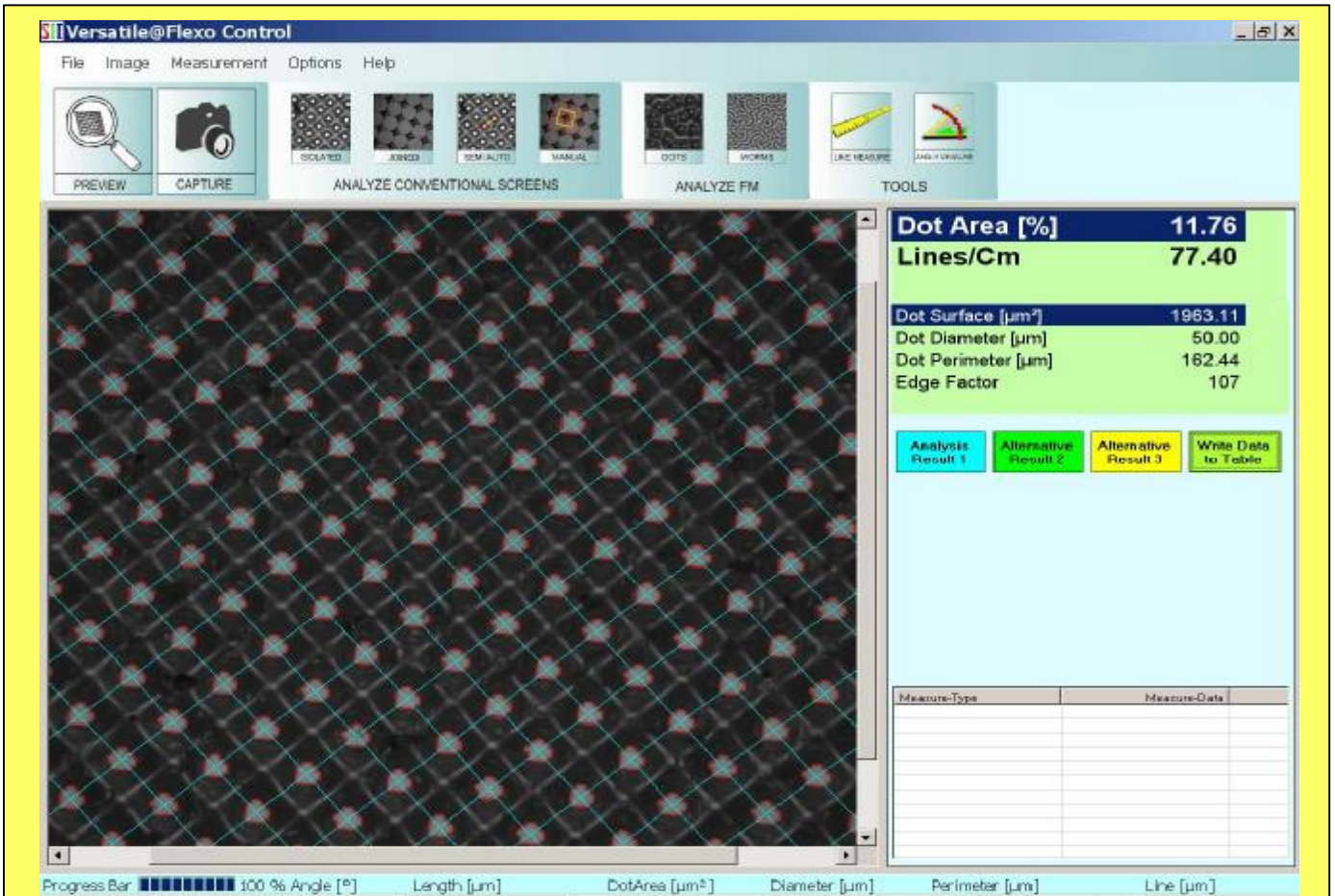


Measure wherever you want

- The E4 is compact, easy to transport and operate
- The separate light box allows operation anywhere
- Plate size is no longer a limitation; easily measure the largest plates
- Equally useful in your press and pre-press department to improve communication
- The perfect combination of high quality and low cost

•The **Flexo Control** analyses AM and FM plates fully automatically



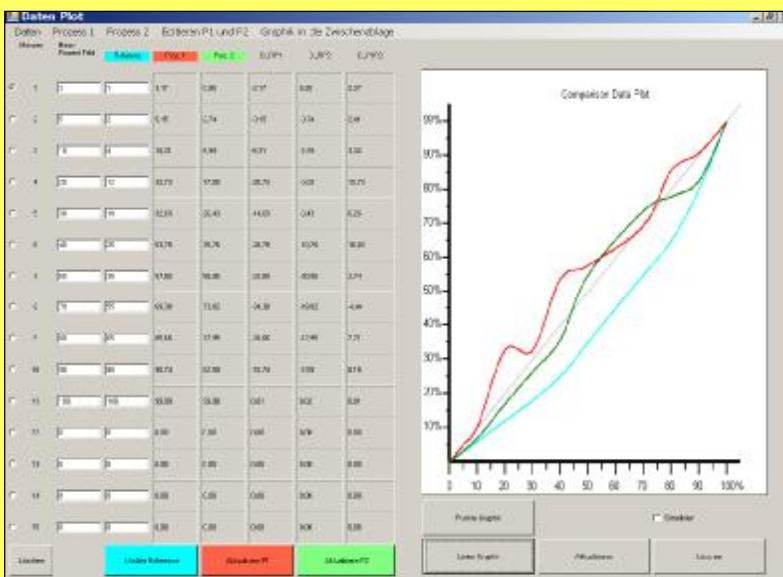


Data Capture

- Image with measured results
- ImageHistory of measurements
- Data comparison, i.e.mask vs.plate
- Save all data and the graph of the data plot window
- Save data of ISO target measurement

Single Measurement of

- Barcode width
- Screen ruling
- Screen Angle
- Single dot size
- Adjacent groups of 4 dots



Data Plot window

	DOT Area %	STD	
<input type="radio"/> 3 %	3,00	3,09	OK / Passed
<input type="radio"/> 5 %	5,00	5,30	OK / Passed
<input type="radio"/> 10 %	10,00	9,48	OK / Passed
<input type="radio"/> 30 %	30,00	30,14	OK / Passed
<input type="radio"/> 50 %	50,00	50,65	OK / Passed
<input type="radio"/> 70 %	70,00	69,60	OK / Passed
<input type="radio"/> 90 %	90,00	89,87	OK / Passed
<input type="radio"/> 95 %	95,00	95,07	OK / Passed
<input checked="" type="radio"/> 97 %	97,00	97,21	OK / Passed

Target Testergebnis: OK / All passed su

clear accept OK close

ISO Target result window

Measuretype	Data
Dot Area [%]	2.65
Lines/Inch	116.20
Dot-Size [mil ²]	1.96
Dot-Diameter [mil]	1.58
Dot-Perimeter [mil]	9.94
Edge Factor	140

**Fast and easy to control
your measurement results**

What makes the Flexo Control unique

- **Automatically analyzes all printing dots on an area of >3mm²**
- **Compare mask and plate results**
- **Repeatability better than +/-0.5%**
- **Measure all material from 80 – 200 lpi**
- **Meet highest quality requirements with ISO target and auto-calibration system**

Functions	Measurement of	Plate Type	Measurement Technology
-Dot area %	Flexo Plates	AM,FM	Sensor 1,3MB
- Dot size (dot diameter)/µm/mil	Masked Material		Area to be analysed >3mm ²
Screen ruling (lines/cm or lines/inch)	Film		Screen Ruling:23-85L/cm; 58-216 Lpi
Line Width			Repeatability: +/- 0,5%
Angle	Special Feature		Separate lightbox with external powersupply
Digital zoom 4x	Autocalibration with ISO Target		Optional
			ISO Calibration target
Interface:	Power Supply:		Delivery content
USB 2	USB2 power		plate reader incl. USB cabel
	Lightbox; external powersupply		Software and Dongle
Sytem Requirements	Windows7,XP,Vista, processor min.1GHz, 1GB RAM,2 USB2 ports,CD Drive, min screen resoluution 1024x768		Lightbox with external powersupply <12 Volt Transportation box

Sibress

SIBRESS, Bressanone:

E-mail to: marketing@sibress.com;
www.sibress.com