



Flexo Reader E3

SIBRESS

ITALY

Seiserleite 82

39040 Vahrn-Bressanone

marketing@sibress.com



Flexo Reader E3

- E3 Camera

Ring for Sleeves





Flexo Reader E3

Front View and
Sleeve Ring



Stand Alone to
Measure All Size
Plates, Films, & Masks





Flexo Reader E3

Value Propositions

Quality control of flexo plates

- **Early detection of production errors**
- **Tremendous saving in time and money**
 - Avoid future problems in production process
 - Save ink and paper by running the press only with quality-assured plates
- **Reduce plate waste** by reducing the number of iterations to obtain a corrected plate
- **Improved calibration** of Flexo CTP



Flexo Reader E3

Media Compatibility

Flexo and Letterpress Plates

Transparent and Steel Backed Plates

Solvent, Aqueous and Thermal
Washout Masks

Negatives

Halftone Proofs



Flexo Reader E3

Plate Production Control Points

Halftone Attributes

Dot Area

Screen Ruling

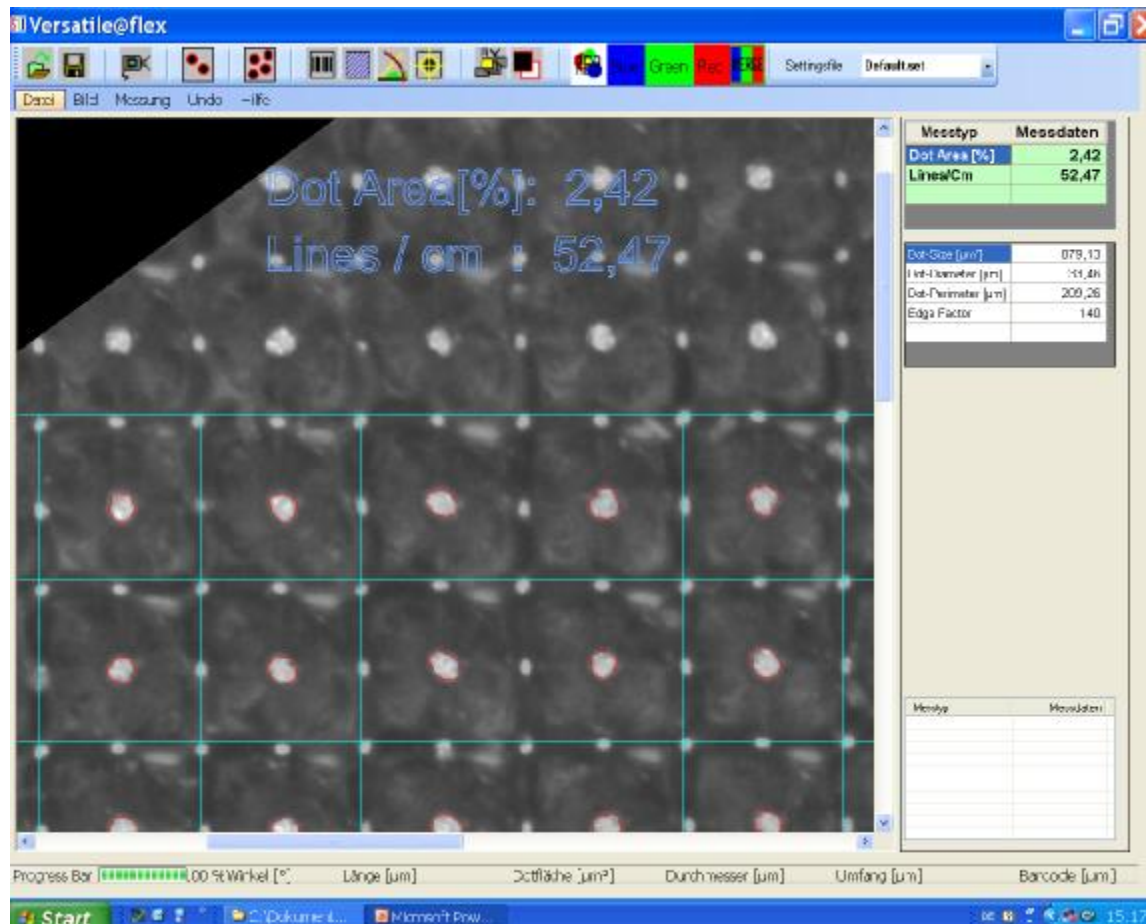
Screen Angle

Dot Quality



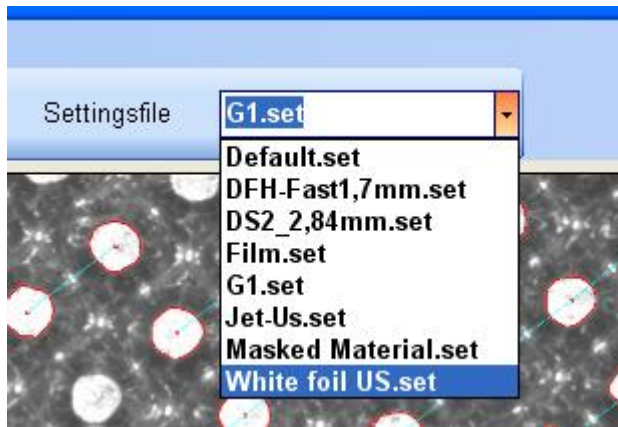
Flexo Reader E3

- The user interface gives a practical overview and control of all important information, as dot area (%), line screen ruling, dot size, dot diameter, dot parameter, edge factor.

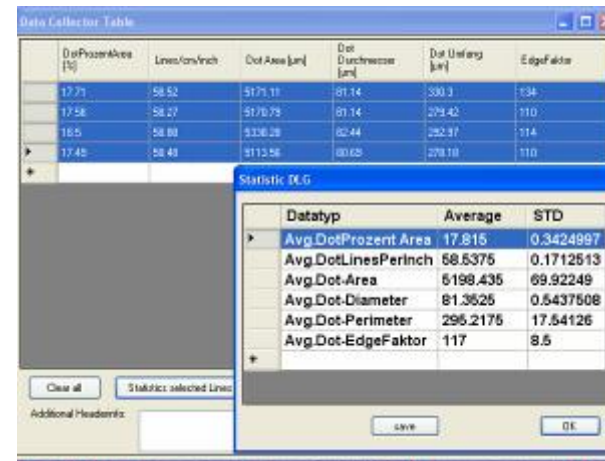




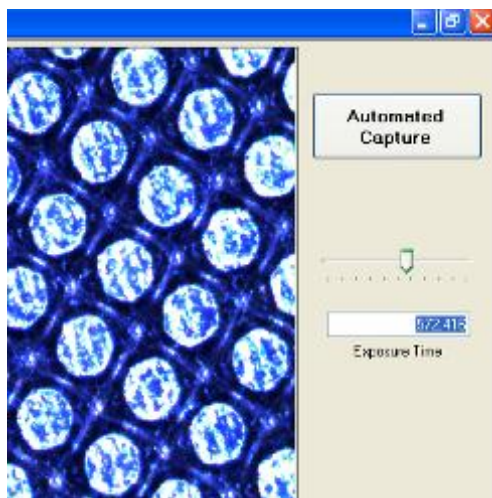
Flexo Reader E3



Individual Settings for various materials make analysis fast and economical



Statistical information for all measurements



Just one button Camera interface brings the perfect image



Flexo Reader E3

- All measured values can be saved in Excel. Of interest if you want to discuss a manufacturing problem, or if you are ISO certified.

The screenshot displays the Versatile@flex software interface. The main window shows a grayscale image of a flexographic printing pattern with a grid overlay. A 'Daten Kollektor Tabelle' (Data Collector Table) window is open, displaying a table of measurement data. The table has the following columns: Dot-Prozentile [%, Lines/cm/inch, Dot Area [µm], Dot Durchmesser [µm], Dot Umfang [µm], and EdgeFaktor. The data rows are as follows:

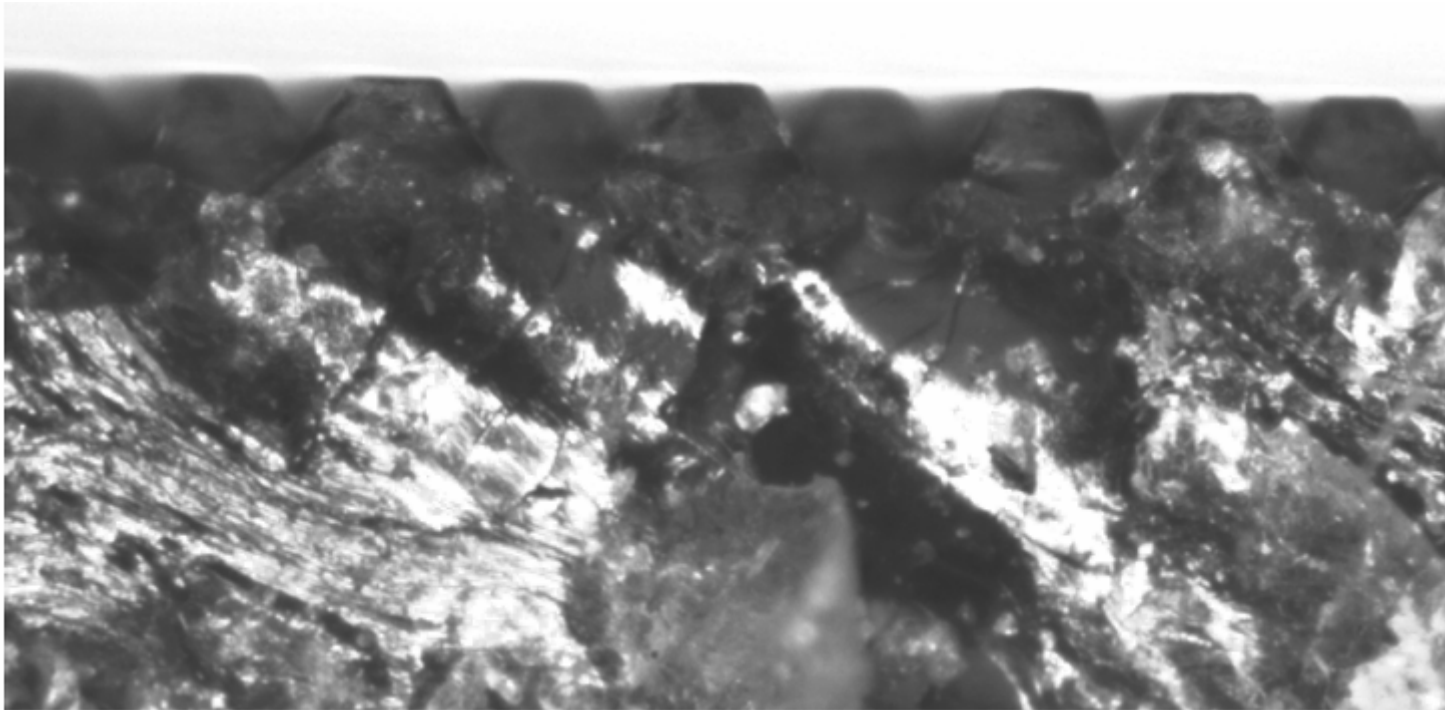
Dot-Prozentile [%,	Lines/cm/inch	Dot Area [µm]	Dot Durchmesser [µm]	Dot Umfang [µm]	EdgeFaktor
2.47	52.52	896.91	33.79	209.55	139
2.42	52.47	879.13	33.46	209.26	140
2.3	52.55	831.86	32.54	204.46	140
2.2	52.74	791.91	31.75	199.78	140
2.39	52.54	865.03	33.19	208.25	140

Below the table are buttons for 'Alles löschen', 'Statistik: letzte Seite Zählen', 'Daten speichern', 'Daten Export', 'Drucker einrichten', 'Seitenlayout', and 'Daten drucken'. There is also a text field for 'Zusätzliche Headerinfo:'. On the right side of the interface, there are two panels: 'Messtyp' and 'Messdaten'. The 'Messtyp' panel shows 'Dot Area [%]' with a value of 2.39 and 'Lines/Cm' with a value of 52.54. The 'Messdaten' panel shows 'Dot-Size [µm]' (865.03), 'Dot-Diameter [µm]' (33.19), 'Dot-Perimeter [µm]' (208.25), and 'Edge Factor' (140). At the bottom of the window, there is a progress bar and a status bar with the following labels: 'Progress Bar', '00 % Winkel [°]', 'Länge [µm]', 'Dotfläche [µm²]', 'Durchmesser [µm]', 'Umfang [µm]', and 'Barcode [µm]'. The Windows taskbar at the bottom shows the Start button, several open applications, and the system clock showing 15:29.



Flexo Reader E3

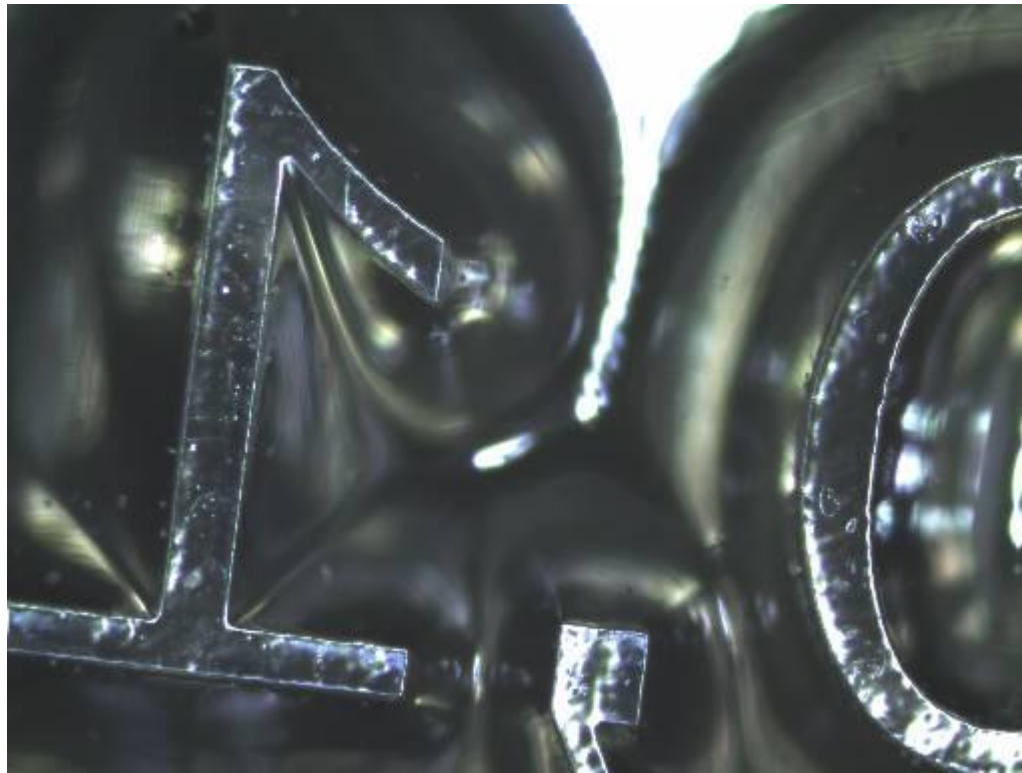
- Sample Image for Dot Shape/ Edge Shape





Flexo Reader E3

- Sample Image, Surface Inspection





Flexo Reader E3

System requirements:

Operating System: Windows XP, with .NET Framework (supplied with application software on CD-ROM)

CPU: Pentium 4 or equivalent, 1 Ghz or faster, 500MB memory or more.

Video: 1024 x 768 resolution, 24 bit color or better.

Interface: One USB 2.0 port for the SIBRESS E3 hardware, one additional USB port for the software dongle.

Disk space: 50MB minimum for software installation.

Powered USB Hub, recommended for Laptop use



Flexo Reader E3

- Camera E3
- The software: Verstile@flex
- Free updates
- Languages: German, Englisch, Spanish, French
- Options:
- Ring for sleeves
- Flexoplate strip holder to analyse material thickness, dot flanks and their angle