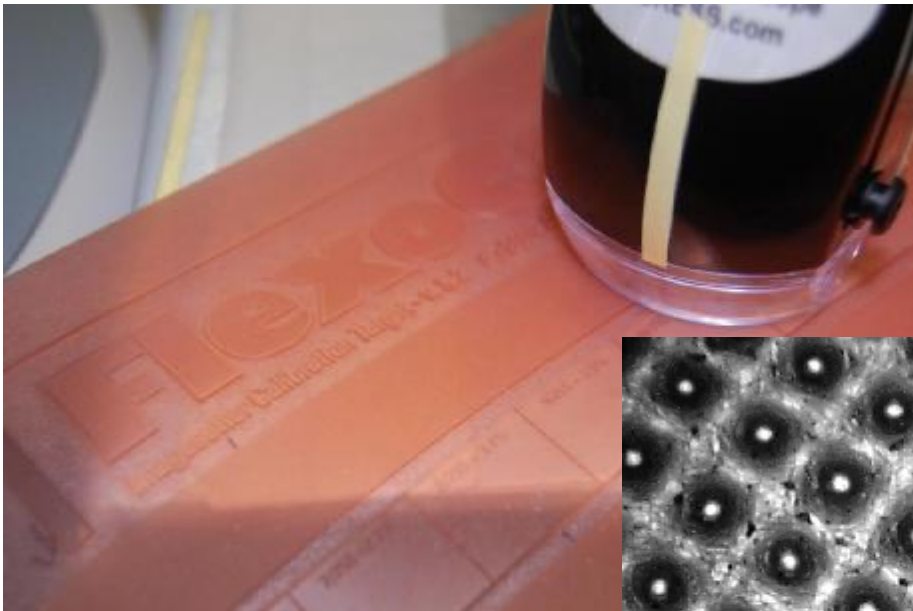
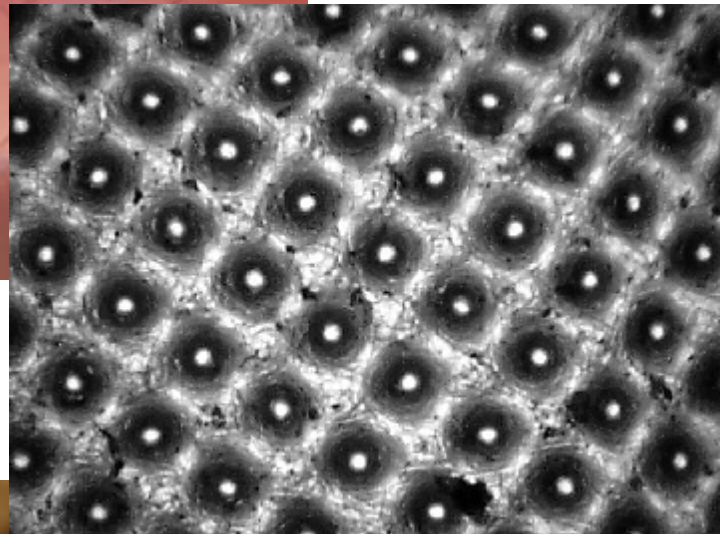


PIT 40x – 140x
PIT from Flexo 2 Print
Sibress



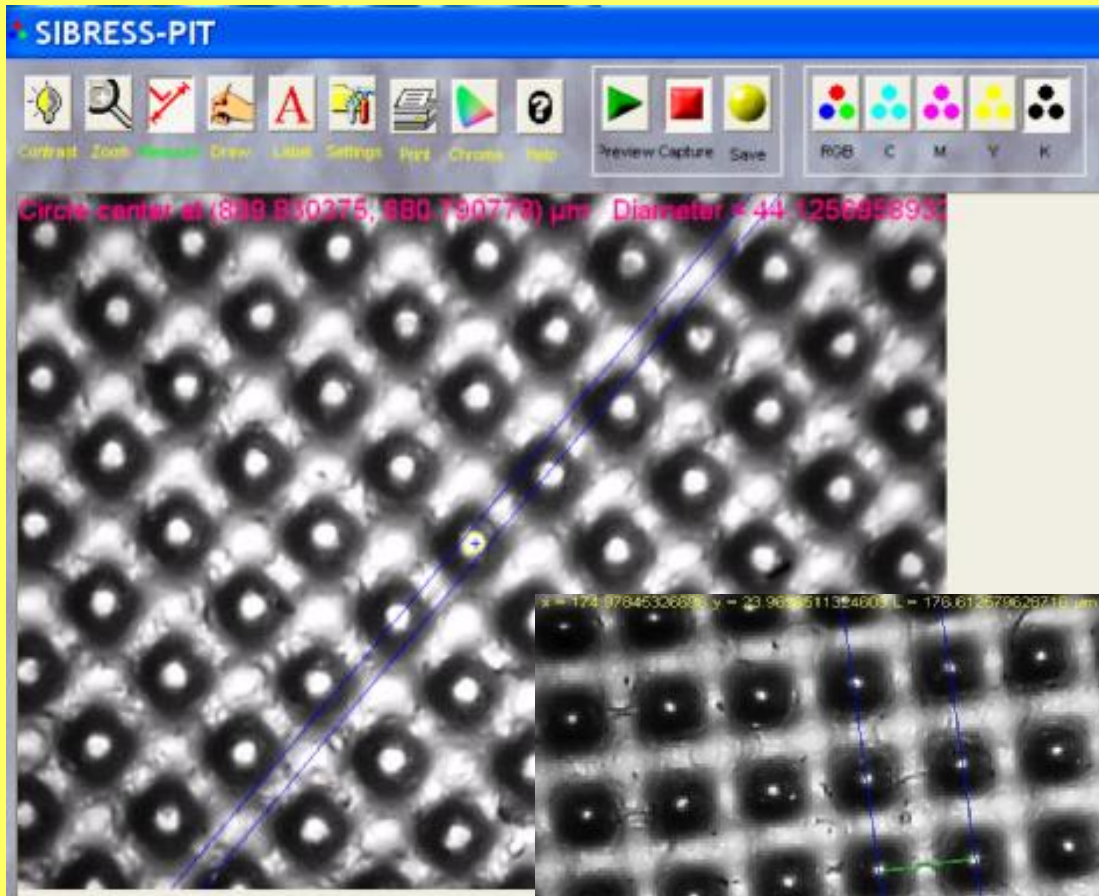
**Qualitycontrol for
your flexoplate**



and for your print



Plate Measurement



Measure::

Dot Size and Linedistance in μm , -as well as the Angle

From

Film, Plate to Print

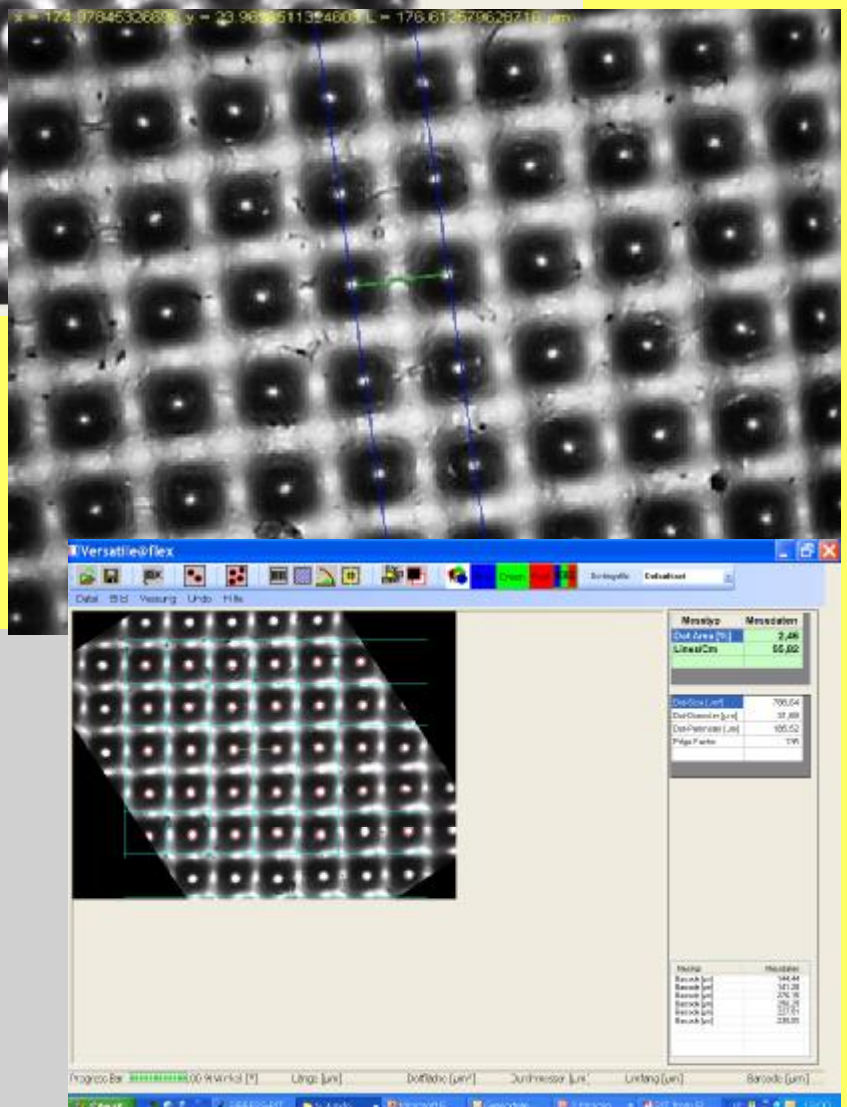


Image Sensor: 1/3" CMOS
 Pixels: 640 x 480
 Power: 175W port
 Light Source: High output white LEDs
 Field of View
 @40X: 7.5 x 10 mm
 @140X: 1.8 x 2.5 mm
 Resolution: 4 microns @ 140x magnification

Computer Requirements

Pentium III 500MHz or greater.
 Windows 2000/XP, DirectX 8.1 or greater, Internet
 Explorer 5.0 or greater, USB port.

Optional Versatile@flex for automatic analyses of your Flexoplate

Sibress

SIBRESS, Bressanone:

Mail to: marketing@sibress.com;
www.sibress.com